

# 2012 Tour





On the cover: **42QD** Autumn Frost Full-Body Paint

 SMARTSPACE™

42QD Apollo with Coffee-Glazed Vienna Maple



42QD Rio Grande with Coffee-Glazed Forest Cherry

## A New Standard

Experience the beauty, luxury, and livability of the 2012 Winnebago Tour and you'll appreciate all that a diesel pusher motor home can be. We've pulled out all the stops, introduced a new floorplan and incorporated exciting updates to our flagship motor coach. Winnebago Industries—over fifty years in the making—brings you the utmost in quality and livability. It's exactly what you should expect from the most recognized name in motor homes.

Three floorplans ride atop the Maxum Chassis with its advanced lowered rail design bringing you a superior ride and unsurpassed exterior storage volume and accessibility. Luxurious styling abounds with Ultraleather™, polished porcelain tiling,

enhanced ceiling trim, and a myriad of touches that make traveling in your Tour a true pleasure. Plus, you'll find plenty of ways to relax with the available +Lounge passenger seat with flip-up workstation, extendable sectional sofa, available wall-away recliners or Euro recliners at your disposal. An elegant buffet provides additional storage and the dining table extends for guests. Slideouts create an incredibly spacious interior, and with the generous window above the buffet and polished porcelain tile flooring, you'll quickly be calling your Tour "home."

Travel in style. And see yourself in a 2012 Winnebago Tour.

### Why Tour?

- Three 42-foot floorplans with full-wall or quad slideouts
- Unmatched performance of the Maxum Chassis®
- New **+Lounge** passenger cab seat w/flip-up workstation
- Stainless steel appliances
- Extendable sectional sofa (42QD and 42AD)
- Powered king bed with Ideal Rest® mattress
- MCD American Duo® solar/blackout roller shades
- Polished porcelain tile floors
- Available Maytag french-door residential refrigerator



**Recognized Quality** The RV Dealers Association bestows its annual Quality Circle Award based on dealer ratings to the manufacturers that provide exceptional products, service and support. Only one manufacturer has received this honor for sixteen consecutive years: Winnebago Industries.®



**Freshly Washed** No need for a stop at the laundromat when traveling. The available stackable washer and dryer makes laundry a breeze, so you will never have to do without your favorite outfit.

## Lounge in Style

Whatever your style, the Tour's spacious and livable interior will meet your needs. Multiple slideouts define a lounge area perfect for entertaining. Ultraleather-clad furniture such as the extendable sectional sofa (42AD/42QD) and Rest Easy sofa (42AD/42JD) offer flexible, incredibly comfortable seating, whether it's party time, game time, or nap time.

2012 offers two great recliner options: the wall-away recliner, standard (42QD) or optional as a pair (42AD); or the Flexsteel® Euro recliner with built-in footrest, which is available solo (42QD) or as a

pair (42JD). No matter where you sit, you will enjoy exceptional picture quality and sound with an LCD HDTV and home theater sound system. Select the Blu-Ray Home Theater System for the absolute best in audio and picture clarity.

Find yourself in television heaven with a 40" LCD HDTV in each model. An additional 40" LCD HDTV in the 42AD and a 32" LED HDTV in the 42JD means you'll never miss a second of your favorite show. Add the electric fireplace (NA 40JD) for the perfect finishing touch.

Your comfort is assured with the TrueAir® maximum comfort air conditioning system. It combines three high-efficiency roof mounted units with the industry leading advanced ducting and control system that ensures an even climate throughout the coach.

**WINNEBAGO**  
GoWinnebago.com

GoWinnebago.com is your resource for web-exclusive content and all the details you can't fit in a brochure!



# Beauty is More Than Skin Deep

They say the kitchen makes the home, and that may well be the case with the gorgeous and functional kitchen in the Winnebago Tour.

Luxurious cabinetry is available in three coffee-glazed finishes. Appliances include a four-door refrigerator/freezer, microwave/convection oven or available microwave/speedcook oven, three-burner recessed range with glass cover, and available drawer-style dishwasher. Note the Corian® countertops, backsplash, and sink covers. Add to it the expansive pantry, tucked away behind a full-size door (42QD and 42JD) and you'll see we haven't forgotten a thing.

Opt for the stainless steel french-door refrigerator with drawer-style freezer and ice/water dispenser, or the microwave with speedcook oven. Perhaps the available central vacuum system is just the thing for you. The 42QD also offers a pull-out island with Corian countertops.



42JD



42QD



**Simply Gorgeous**  
The Maytag® stainless steel french-door refrigerator with drawer-style freezer is not only beautiful to look at, it's incredibly spacious, offers ice and water dispenser, and adds to the Tour's luxurious, residential feel. It also comes with a larger inverter and additional coach batteries so you'll have plenty of cooling power on the road.



**Clean Up** After the final bites are savored, clean up is a breeze when you choose the drawer-style dishwasher with plenty of room for larger plates.



**Food Lover's Heaven** Stock up for meals of all types and sizes in the one-of-a-kind **Pantry**® 2. (42JD and 42QD). It opens to reveal vertical storage which in turn opens to reveal spacious shelves and large drawers.

# Nighttime Oasis

Serenity. Comfort. Privacy. It's all yours in an incredibly spacious bedroom. We start with a powered king bed with the Ideal Rest® Digital Comfort Control mattress. It features dual remotes that let you adjust the firmness of each side of the bed independently for perfect individual comfort.

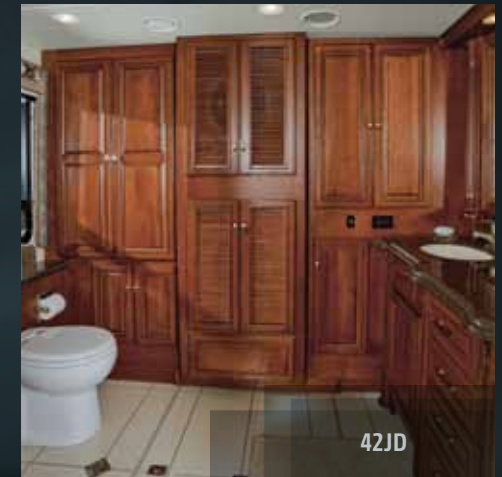
Like to read or watch a movie in bed? Just elevate the head of the bed with the touch of a button. The bedroom stereo system comes complete with AM/FM stereo, CD/DVD player, iPod/MP3 input, headphone jack, and alarm clock so you can watch your favorite shows or movies in complete comfort. The 26" LCD HDTV in the 42JD and 42QD, and 32" for the 42AD are positioned for easy viewing.

Generous wardrobe space and a chest of drawers give you plenty of room for all your clothing and accessories. In fact, we actually increased the wardrobe's hanging space by 18% for 2012 in the 42JD and 42QD.



## Look Your Best

The oversized wardrobe and chest of drawers lets you bring clothes for any occasion.



**Residential Comfort** Stylish cabinetry, Corian countertops, plentiful storage and the BIG Shower (NA 42QD) with skylight combine to provide a private, incredibly well-appointed master bath.

**WINNEBAGO**  
GoWinnebago.com

GoWinnebago.com is your resource for web-exclusive content and all the details you can't fit in a brochure!





## Drive On

Getting behind the wheel of your Tour is an absolute pleasure, starting with the comfort of heated Ultraleather cab seat, with six-way power controls and a footrest for the passenger. The SmartWheel™ tilting/telescoping steering column adjusts to fit you to perfection, and adjustable brake and accelerator pedals add to the custom fit. You can even add more functionality with the +Lounger for the passenger seat with its flip-up workstation and built-in footrest.

Entertainment and navigation are easy with the RV Radio® and its 6.5" LCD touch screen, which also serves as the monitor for the rearview and sideview

cameras. It includes AM/FM stereo, CD player, weather band, and MP3 input. Add Sirius Satellite Radio for over 100 stations of diverse music and talk radio programming.

At the campsite, we have your shade and privacy covered with the MCD American Duo solar/blackout roller shades that provide 100% light control as well as a solar shade so you have the say on how much light and privacy you have moment to moment.

With the comfort and technology of your Winnebago Tour, driving is such fun you will enjoy every minute of your journey.



**Infotainment Center/GPS** This available technological marvel combines GPS navigation, CD/DVD player, rearview monitor and more into one 7" touch screen. It even includes a second monitor for the passenger.

# Best in Class

See how Winnebago Industries takes motor home design and function to the next level, and why we've earned the right to be called The Most Recognized Name in Motor Homes.®



**SmartSpace™** Design is at the core of our exclusive new +Lounge passenger cab seat. It combines the ultimate comfort of a plush recliner with the added usability of a personal activity space. Best of all, the +Lounge passenger cab seat rotates to become an integral part of the living area.



**Let There Be Light** The smoothly retracting *MCD American Duo Solar/Blackout Roller Shades* control just how much light and privacy you want with smooth finger-tip control no matter the time of day.



**Sleep Right** Relaxation takes on a whole new look with the *Ideal Rest Digital Comfort Control Mattress* complete with king-sized powered bed. You can elevate your head for movies in bed and individually adjust the firmness of each side of the mattress to your unique specifications.



**Outdoor Fun** Liven up the campsite or tailgate party by choosing the *Exterior Entertainment Center* with LCD TV, CD/DVD player, AM/FM stereo and two speakers in a lockable compartment.



**Easy Access** The new *Exterior Slideout Storage Tray* has been redesigned and enhanced to accommodate the full usable space of the storage compartment and also has a lower profile so you can stow larger items without bending over or crawling on your knees.



## Take A Load Off

For 2012 we introduce the *Flexsteel Euro Chair*, a recliner with built-in footrest that blends modern styling and perfect relaxation just for you (available 42JD/42QD).



## Campsite Convenience

Convenience begins with the *Exterior Service Center*, featuring color-coded labels that remove the guesswork. QuickConnect® makes hookups a snap and the QuickPort® hatch allows the bay door to close with hook-ups connected.



## Time To Grill The

*LP Gas Accessory Connection* is located on the patio side for your convenience.

## Simply the Best

Winnebago Industries teamed with Freightliner® Chassis, the undisputed leader in diesel motor home chassis, to design the Maxum Chassis for the Winnebago Tour, and Maxum Chassis is the defining standard in diesel pusher design and performance.

How did we do it? We combined Freightliner's know-how with our SuperStructure® technology, and the result is a revolutionary chassis with a lowered-rail design that not only delivers an incredibly smooth ride and superior handling, but immense, industry-leading cross-coach storage capability—up to 192 cubic feet.

The Maxum Chassis comes equipped with the following:

- 44,600-lb. GVWR
- Cummins Turbo-Charged ISL 450-hp Diesel Engine
- Allison 3,000 MH 6-Speed Transmission
- 15,000-lb. Hitch
- ZF IFS Front Suspension
- NeWay® Rear Air Suspension

And, to provide you with peace of mind no matter where your travels may take you, Freightliner's Maxum Chassis comes with a 3-year/50,000-mile limited warranty that includes towing and roadside assistance, and over 400 service locations across the U.S. and Canada.

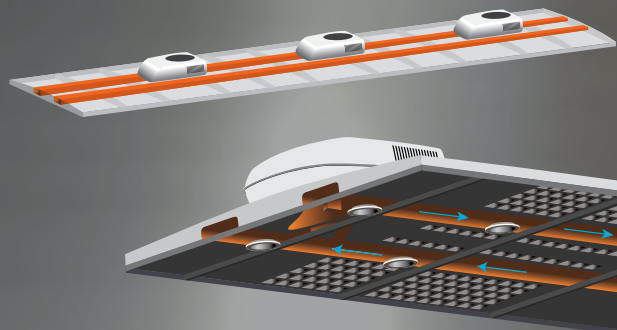
Settle for nothing less than the best.



## Set Your Coordinates to Maximum Comfort

TrueAir® Maximum Comfort AC raises the bar on RV air conditioning, employing next-generation technology to provide unparalleled climate control and comfort:

- Three high-efficiency, low-profile, roof-mount cooling units deliver unsurpassed cooling power
- D-shaped, formed ductwork optimizes airflow
- Dual-zone thermostat offers precision cooling
- Infinitely adjustable ceiling vents provide finite control



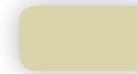
**WINNEBAGO**  
GoWinnebago.com

GoWinnebago.com is your resource for web-exclusive content and all the details you can't fit in a brochure!

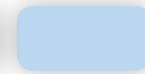


# Floorplans

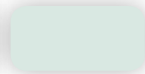
Dimensions shown are for sleeping space only and may vary due to styling differences. Dashed lines denote overhead storage areas. Floorplans and specifications are also available online at [GoWinnebago.com](http://GoWinnebago.com).



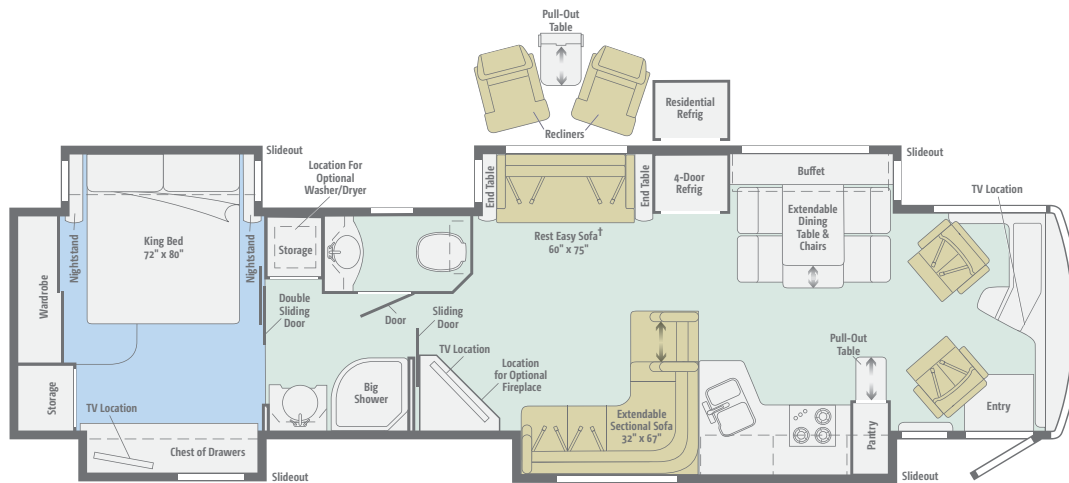
Standard  
Ultraleather



Carpet

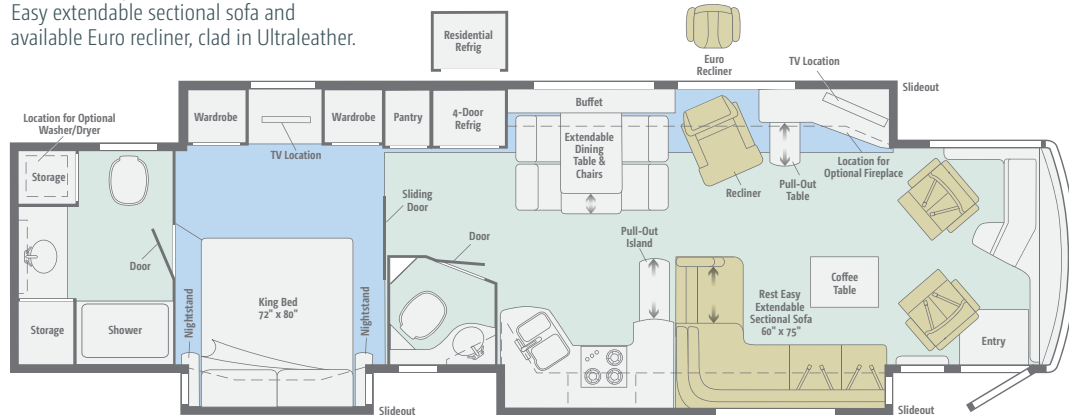


Porcelain Tile



**42AD** Quad slideout with spacious front galley, extendable sectional sofa and a Rest Easy sofa in Ultraleather facing a corner LCD TV with optional fireplace.

**42QD** Full-wall triple slideout and rear master bath, guest-bath mid-coach, Rest Easy extendable sectional sofa and available Euro recliner, clad in Ultraleather.



*New*  
**42JD** New for 2012, a series of duos: luxurious master bathroom with two sinks, dual TVs front and mid-coach, and a pair of available Ultraleather Euro recliners with built-in footrests.

**WINNEBAGO**  
GoWinnebago.com

See your favorite motor homes come alive with virtual tours at [GoWinnebago.com](http://GoWinnebago.com).



# Specifications

## MAXUM® FREIGHTLINER® CHASSIS

450-hp Cummins® ISL 8.9L turbo-charged diesel engine

Adjustable brake and accelerator pedals

Allison® 3000 MH 6-speed electronic transmission w/engine compression brake

Information display center

ZF IFS independent front suspension, NeWay® rear suspension

160-amp. alternator

Air brakes w/ABS

Quick connect air accessory

Automatic leveling jacks w/3-position controls

Tow power package w/7-pin trailer wiring and I.P. wiring

Trailer hitch<sup>6</sup> 15,000-lb. drawbar/1,500-lb. maximum vertical tongue weight

Stylized aluminum wheels

## CAB CONVENIENCES

Cab Seats armrests, lumbar support, multi-adjustable recline and six-way power pedestals

Heated driver seat

Heated, queen passenger seat

Passenger seat footrest

RV Radio®/Rearview Monitor System 6.5" LCD color touch screen, CD player w/remotes, weather band, iPod/MP3 input, rearview color camera w/one-way audio and sideview camera system

Tilt/telescoping SmartWheel™ steering wheel w/infinite adjustable column

Cruise control

Power door locks w/remote keyless entry

Electric adjustable mirrors w/defrost and turn signal light in lower glass

12-volt powerpoints

Powered stepwell cover

Two-speed built-in defroster fans

MCD American Duo® solar/blackout roller shades powered for windshield, manual for driver/passenger windows

Chassis/house battery radio power switch

Dual map lights

C.B. wire prep

## OPTIONAL EQUIPMENT

Infotainment Center/GPS voice navigation, 7" color LCD touch screen monitor w/PIP, handheld remote and steering wheel remote, AM/FM/CD/DVD radio, Bluetooth™, Sirius satellite ready, iPod interface connector, passenger-side monitor, rear and sideview cameras

Sirius® Satellite Radio 6-month complimentary subscription and iPod interface connector

+Lounger heated passenger cab seat w/flip-up workstation

## INTERIOR

32" LED HDTV (42JD)

40" LCD HDTV

Home Theater Sound System CD/DVD player, receiver, amplifier, 5 speakers and subwoofer

Digital HDTV amplified antenna system

Area rug (lounge area 42QD and rear bathroom 42JD, 42QD)

Key-activated slideroom master lock switch

HD video selection system

Satellite system ready (front and bedroom)

OnePlace® systems center

Tinted, dual-glazed, thermo-insulated coach windows

Soft vinyl ceiling

Powered roof vent (galley and bath)

MCD American Duo solar/blackout roller shades

Accent lights above front overhead cabinets and ceiling trim panels

## OPTIONAL EQUIPMENT

Blu-Ray Home Theater Sound System CD/DVD player, receiver, amplifier, 5 speakers and subwoofer

Dirt Devil® central vacuum system w/vac pan

Stackable washer/dryer

King-Dome® in-motion satellite dish, dual LNB, HD-ready (front and bedroom)

King-Dome automatic satellite dish antenna, HD-ready (front and bedroom)

Electric fireplace (42QD, 42AD)

## GALLEY

Corian® countertops, backsplash and sink covers

4-door refrigerator/freezer w/icemaker

Stainless steel microwave/convection oven w/sensor cook and vented range fan

3-burner range top w/glass cover and storage below

Filtered cold-water faucet

## OPTIONAL EQUIPMENT

Stainless steel Maytag® refrigerator w/french doors, freezer drawer, water and ice dispenser (includes 2,800-watt inverter and 2 additional 12-volt coach batteries)

Stainless steel drawer-style dishwasher

Stainless steel microwave/speedcook oven w/exterior vented range fan

## BATH

Corian countertop

Shower surround w/molded shower seat

Flexible showerhead

Moen® Posi-Temp® shower valve

Textured glass shower door

Skylight

Porcelain toilet

## BEDROOM

26" LCD HDTV (42JD, 42QD)

32" LCD HDTV (42AD)

Stereo system AM/FM, CD/DVD, alarm clock, iPod/MP3 input, headphone jack, speakers (2)

Ceiling fan

Powered king bed w/Ideal Rest® digital comfort control mattress and remote controls

Bedsread, pillows and shams

## EXTERIOR

Auxiliary docking lamps

Driver-side service bay light

Powered acrylic patio awning w/wind sensor

Powered acrylic entrance awning

Acrylic window awnings

Lighted storage compartments w/movable panels

KeyOne™ lock system

Lighted storage compartments

4 storage containers w/lids

7' folding stepladder

Porch and stepwell light

Automatic entrance steps

Rear ladder

Lower front protective mask

Double clear-coat exterior

Rear mud flaps

Full-width rear mudguard

## OPTIONAL EQUIPMENT

Entertainment Center 32" LCD TV, AM/FM stereo, CD/DVD player w/remote, iPod/MP3 input w/iPod connector, TV jack, radio antenna, power outlets, speakers (2), subwoofer

90" slideout storage compartment tray

Portable refrigerator/freezer

Polished stainless steel on lower valance doors and panels

## HEATING & COOLING SYSTEM

TrueAir® Maximum Comfort A/C three 13,500 BTU roof air conditioners w/heat pump and condensation pump

Aqua-Hot® 450 hydronic dual-zone heating system w/continuous hot water

## ELECTRICAL SYSTEM

Service Center lighted, 120V AC power, cable input, power cord, QuickPort® service connection hatch

PowerLine® energy management system

Auxiliary start circuit

50-amp. power cord

Exterior TV jack and AC duplex receptacle

2,000-watt inverter/charger w/remote panel (2,800-watt w/optional french-door refrigerator)

10,000-watt Cummins Onan® Quiet Diesel™ generator

Generator slideout mechanism

AC/DC electrical distribution system

4 maintenance-free AGM (Absorbed Glass Mat) sealed batteries (6 batteries w/optional french door refrigerator)

Battery disconnect system (coach and chassis)

Automatic dual-battery charge control

Shoreline/generator automatic changeover switch w/surge guard plus

Solar panel battery charger

Chassis battery charger/maintainer

Automatic generator start system

## OPTIONAL EQUIPMENT

Power cord reel

## PLUMBING SYSTEM

Service Center lighted, pressurized city water hookup w/diverter fill, fresh water drain, drainage valves, exterior wash station w/pump switch, glove holder, holding-tank flushing system, paper towel holder, portable satellite dish hookup, 20 foot sewer hose w/QuickConnect® QuickPort service connection hatch, soap dispenser

TrueLevel™ holding-tank monitoring system

Full coach water filtration system

Permanent-mount LP tank w/gauge

LPG accessory connection (patio area)

On-demand water pump

## OPTIONAL EQUIPMENT

Water supply hose w/reel

## SAFETY

Seat belts

LP, smoke and carbon monoxide detectors

10 BC fire extinguisher

Ground fault interrupter

Daytime running lamps

Fog lamps

High-mount brake lamps

## WARRANTY<sup>7</sup>

12-month/15,000-mile basic warranty<sup>8</sup>

36-month/36,000-mile limited warranty on structure<sup>8</sup>

10-year limited parts-and-labor warranty on roof skin<sup>8</sup>

- <sup>1</sup> The height of each model is measured to the top of the tallest standard feature and is based on the curb weight of a typically equipped unit. The actual height of your vehicle may vary by several inches depending on chassis or equipment variations. Please contact your dealer for further information.
- <sup>2</sup> Tour floorplans feature a wide-body design – over 96". In making your purchase decision, you should be aware that some states restrict access on some or all state roads to 96" in body width. Before making your purchase decision, you should confirm the road usage laws in the states of interest to you.
- <sup>3</sup> The load capacity of your motor home is designated by weight, not by volume, so you cannot necessarily use all available space when loading your motor home.
- <sup>4</sup> Capacities are based on measurements prior to tank installation. Slight capacity variations can result due to installation applications.
- <sup>5</sup> Capacities shown are tank manufacturer's listed water capacity (W.C.). Actual filled LP capacity is 80% of listing due to overfilling prevention device on tank.
- <sup>6</sup> Actual towing capacity is dependent on your particular loading and towing circumstances which includes the GVWR, GAWR, and GCWR, as well as adequate trailer brakes. Please refer to the Operator's Manual of your vehicle for further towing information.
- <sup>7</sup> See separate chassis warranty.
- <sup>8</sup> See your dealer for complete warranty information

NA Not Available

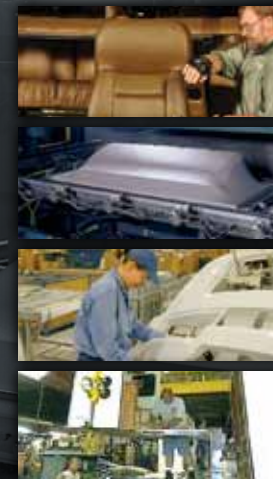
Not all items available in combination. See dealer for details.

Winnebago Industries™ continuing program of product improvement makes specifications, equipment, model availability and prices subject to change without notice. Comparisons to other motor homes are based on the most recent information available at printing.

## Weights & Measures

	42AD	42JD	42QD
Length	42'10"	42'10"	42'10"
Exterior Height <sup>1</sup>	12'11"	12'11"	12'11"
Exterior Width <sup>2</sup>	8'5.5"	8'5.5"	8'5.5"
Exterior Storage <sup>3</sup> (cu. ft.)	183.0	181.4	192.5
Awning Length	20'	18'	14'6"
Interior Height	7'	7'	7'
Interior Width	8'0.5"	8'0.5"	8'0.5"
Freshwater Capacity w/Heater <sup>4</sup> (gal.)	92	92	92
Holding Tank Capacity - Black/Gray <sup>4</sup> (gal.)	51/129	51/116	51/71
LP Capacity <sup>5</sup> (gal.)	30	30	30
Fuel Capacity (gal.)	150	150	150
GCWR <sup>6</sup> (lbs.)	59,600	59,600	59,600
GVWR (lbs.)	44,600	44,600	44,600
GAWR - Front (lbs.)	14,600	14,600	14,600
GAWR - Rear (lbs.)	30,000	30,000	30,000
Wheelbase	279" + tag	279" + tag	279" + tag

## Take a Tour



We're proud of our processes, state-of-the-art facilities and the people who make Winnebago Industries number one. We invite you to visit our complex in Forest City, Iowa, for a first-hand look at the dedication and technology behind every motor home we build.

# NO SHORTCUTS — NO COMPROMISES

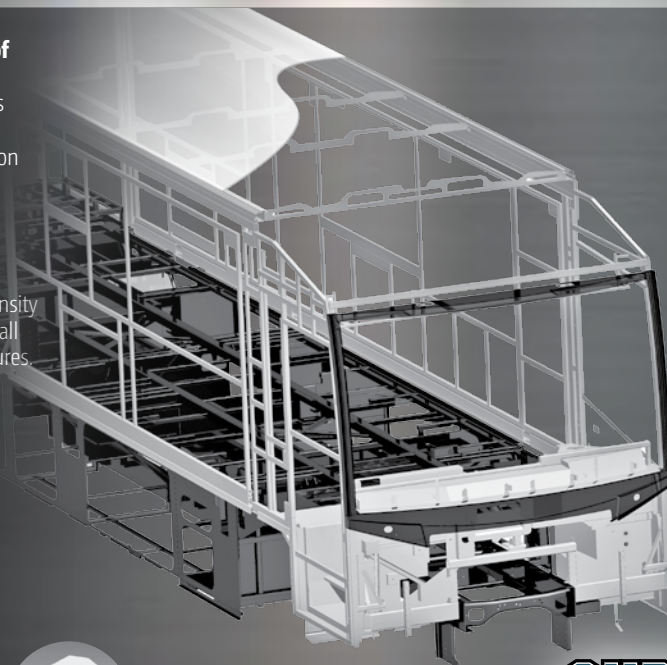
The crowned, one-piece **fiberglass roof** is backed by a 10-year limited parts-and-labor roof skin warranty. Fiberglass offers superior strength and durability over less attractive rubber roofs found on so many competitive models that can streak and degrade over time.

Durable, lightweight **Thermo-Panel® sidewalls** combine fiberglass, high-density block-foam insulation and the inner wall surface with aluminum support structures.

**Metal substructures** secure cabinets and appliances to add safety and stability.

An **electrodeposition coating** helps protect critical steel components.

Specially engineered **interlocking joints** connect the floor, sidewalls and roof into a cohesive unit.



**SUPER  
STRUCTURE**



You can compare features. You can compare styles. But when it comes to quality construction, there is **no comparison**. Only motor homes manufactured by Winnebago Industries harness the legendary strength and durability of our SuperStructure® construction process—a process we've been perfecting for more than 50 years.

SuperStructure means a solid framework, steel and aluminum substructures and components built in-house to our exacting standards. It means managing each detail to ensure the integrity and quality of every coach. It means barcoding parts to save time and frustration during service and running every coach through a high-pressure leak test before it leaves the factory.

Where other manufacturers cut corners, SuperStructure ensures the features you can't see are treated with the same care as the ones you can. When you buy a Winnebago motor home, you are getting a coach that is built for you—and built to last.

# Exteriors

# Décor

Stylize your Tour with one of six exceptional full-body paint options.



**Moonlight Gray**  
FULL-BODY PAINT



**Copper Canyon**  
FULL-BODY PAINT



**Silver Birch**  
FULL-BODY PAINT



**Autumn Frost**  
FULL-BODY PAINT



**Saddle**  
FULL-BODY PAINT



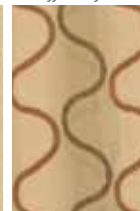
**Dark Ruby**  
FULL-BODY PAINT

Choose from three elegant fabric collections, and three cabinet finishes with satin nickel hardware to create the interior that suits your style.

**Rio Grande** *Hints of a desert oasis offset by a blend of traditional and abstract accents.*



Wheatfields Ultraleather



Accent



Bedspread



Carpet

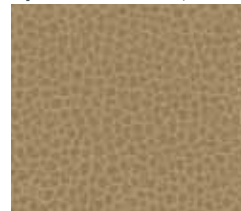


Sage  
Wall Board



Cocoa Brown  
Corian  
Countertop

**Apollo** *A classic color pattern with strong geometric accents.*



Briarwood Ultraleather



Accent



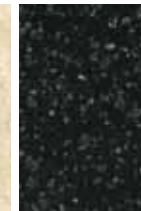
Bedspread



Carpet



Sashay  
Wall Board



Night Sky  
Corian  
Countertop

**Solitude** *Bold color contrasts combined with subtle natural patterns.*



Surfside Ultraleather



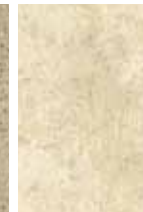
Accent



Bedspread



Carpet



Sashay  
Wall Board



Cocoa Brown  
Corian  
Countertop



Coffee-Glazed Honey Cherry



Coffee-Glazed Forest Cherry



Coffee-Glazed Vienna Maple

*Fabrics and carpets may change without notice or obligation.*



## Don't Miss Out

Caravans, rallies, local and state events, and exclusive RV travel benefits can all be yours as a WIT Club member—and you can meet like-minded folks that possess the same enthusiasm for traveling this great nation of ours. It's a wonderful way to make your Tour a way of life. Learn more about the Winnebago-Itasca Travelers Club at [WITclub.com](http://WITclub.com).

### Members enjoy:

- Caravans and Rallies
- Local and State Group Activities
- RV Travel Benefits



Four simple questions  
to ask *before* you buy.

visit  
**BetterBuiltRVs.com**

## Committed to Service

We back our motor homes with best-in-class support both before *and* after the sale:

- 12-month/15,000-mile basic limited warranty
- 36-month/36,000-mile warranty on structure
- 10-year standard limited parts-and-labor roof skin warranty
- Complimentary 24-hour roadside assistance program
  - RV Technical Assistance Hotline
  - RV Service Appointment Assistance
  - Emergency Trip Interruption
  - Emergency Message Service
  - Nationwide Trip Routing
  - Fee-Free Travelers Cheques



- TripSaver Fast Track Parts guarantees that in-stock warranty parts ship directly to your dealer within 24 hours
- National dealer service network



THE MOST RECOGNIZED  
NAME IN MOTOR HOMES®

NYSE: WGO

[GoWinnebago.com](http://GoWinnebago.com)



For Sales and Service Information Contact:

**LA MESA RV**  
EXPERIENCE LIFE  
[www.lamesarv.com](http://www.lamesarv.com)  
**800-496-8778**